



# INDIA MODERN

BOOTH BC02

18-21

JANUARY 2024

MARINA BAY SANDS

SINGAPORE



ART SG

# INDIA MODERN

Avinash Chandra

Laxman Pai

Bireswar Sen

M. F. Husain

F. N. Souza

Madhvi Parekh

G. R. Santosh

Natvar Bhavsar

Gogi Saroj Pal

S. H. Raza

Gopal Ghose

Shanti Dave

J. Sultan Ali

Shobha Broota

Sohan Qadri



# Bireswar Sen

(1897 - 1974)



Top left:

*Arethusa*

Gouache on paper, 1969

2.2 x 3.5 in. / 5.6 x 8.9 cm.

Signed in English (lower left) 'B. Sen'

Verso: Titled and signed in English and dated  
'ARETHUSA / B.Sen / 21.1.69'

Top right:

*Young Yamuna*

Gouache on paper, 1970

2.5 x 3.5 in. / 6.4 x 8.9 cm.

Signed in English (lower right) 'B Sen'

Verso: Titled and signed in English and dated  
'YOUNG YAMUNA / B.Sen / 21.12.70'

Above left:

*The Mystic Monogram*

Gouache on paper, 1972

2.2 x 3.5 in. / 5.6 x 8.9 cm.

Signed indistinctly in English

(lower right) 'B S(en)'

Verso: Titled and signed in English and dated  
'THE MYSTIC MONOGRAM / B.Sen / 15.2.72'

Above right:

*Thirsty Days*

Gouache on paper, 1970

2.2 X 3.5 in. / 5.6 X 8.9 cm.

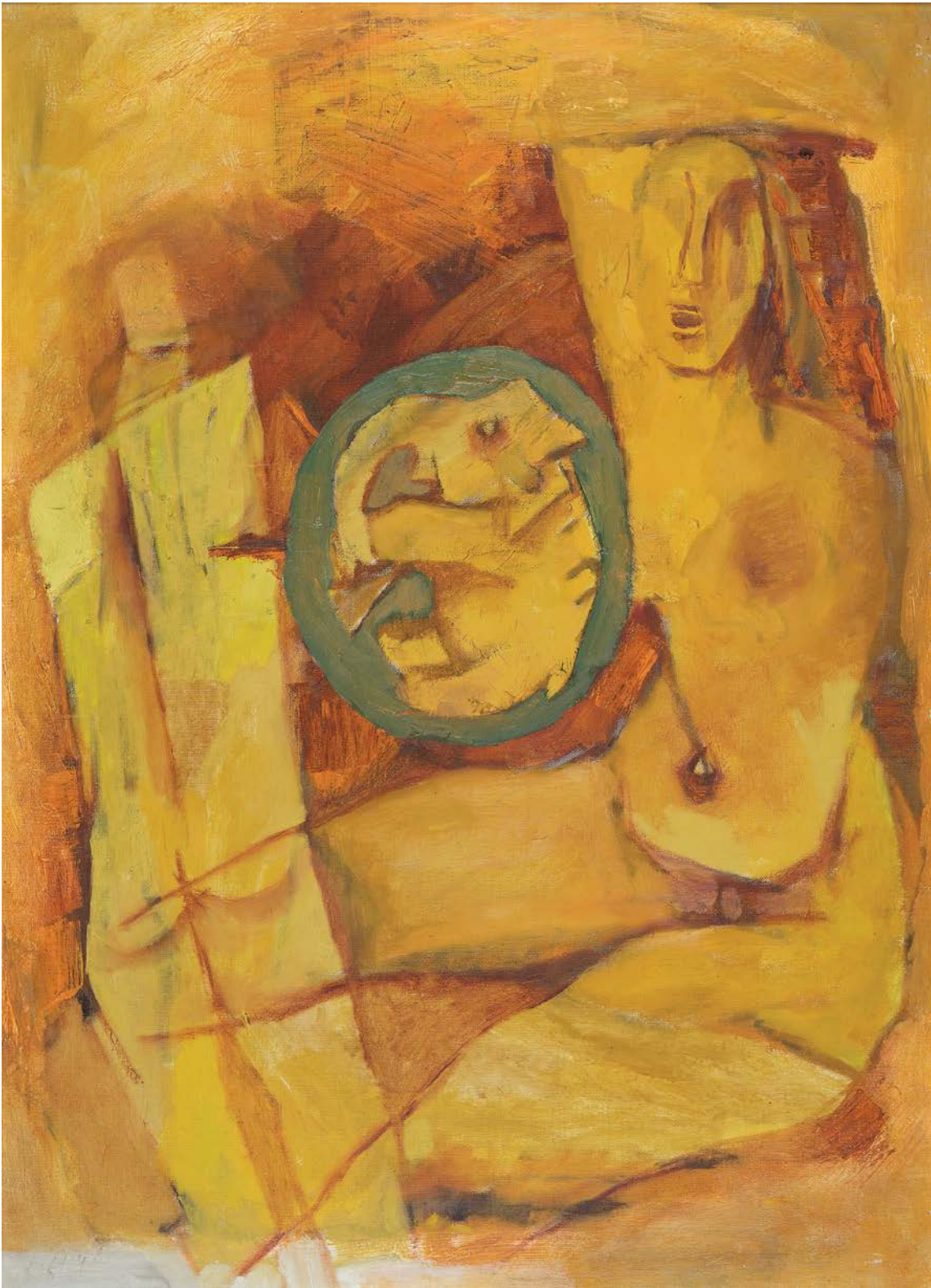
Signed in English (lower right) 'B.Sen'

Verso: Titled and signed in English and dated  
'THIRSTY DAYS / B.Sen / 23.5.70'

This is a set of four works

# M. F. Husain

(1911 - 2011)



*Untitled (Maya's Dream)*

Oil on canvas, 1964

34.5 x 25.0 in. / 87.6 x 63.5 cm.

Signed in Hindi and dated (lower left) 'Husain / 64'

# M. F. Husain

(1911 - 2011)



*Untitled (Nude)*

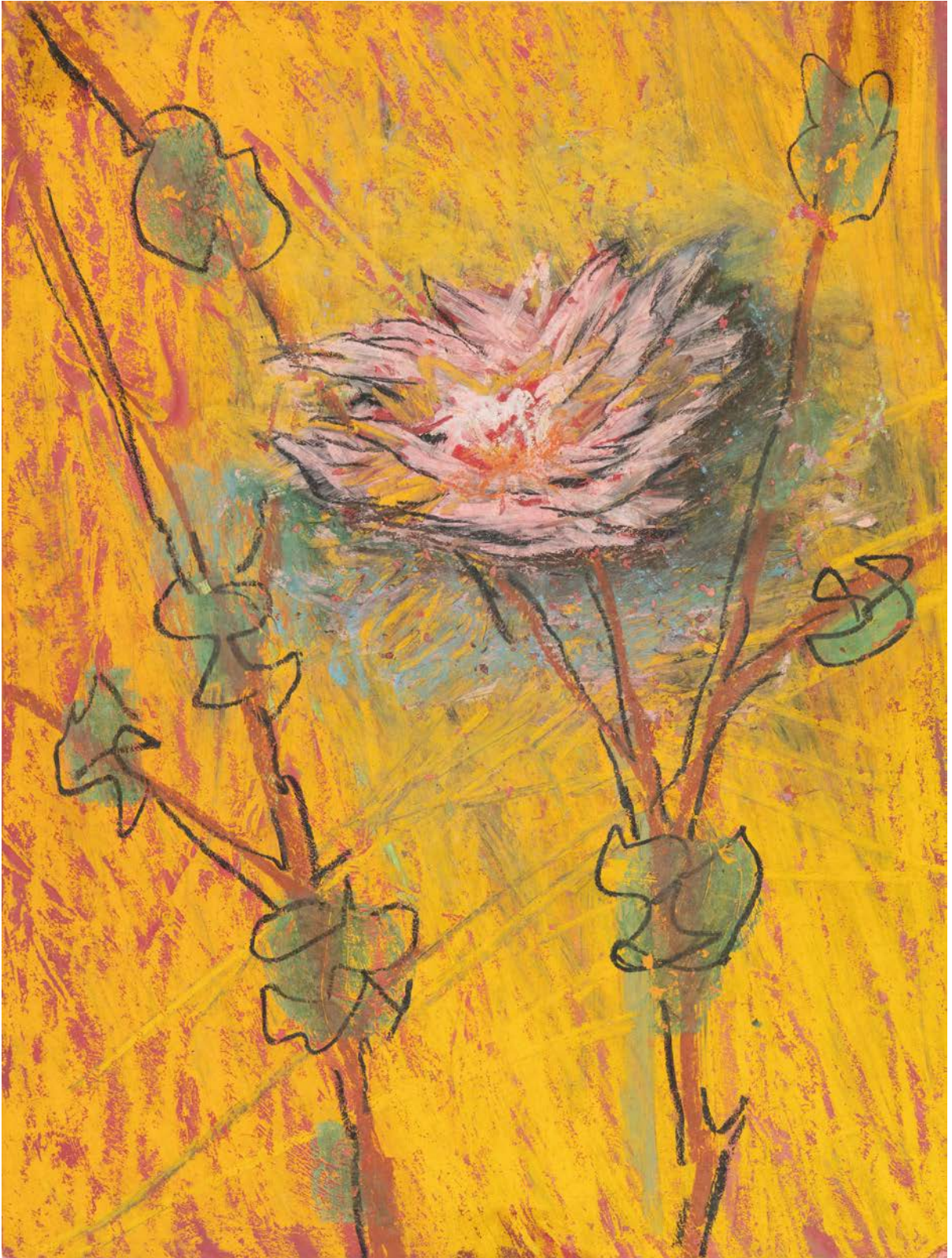
Oil on canvas

48.0 x 24.0 in. / 121.9 x 61.0 cm.

Signed in Hindi and Urdu (lower right) 'Husain'

# Gopal Ghose

(1913 - 1980)



*Untitled*

Gouache and pastel on paper  
12.0 x 9.0 in. / 30.5 x 22.9 cm.

# Gopal Ghose

(1913 - 1980)



*Untitled*

Gouache and pastel on paper, 1957

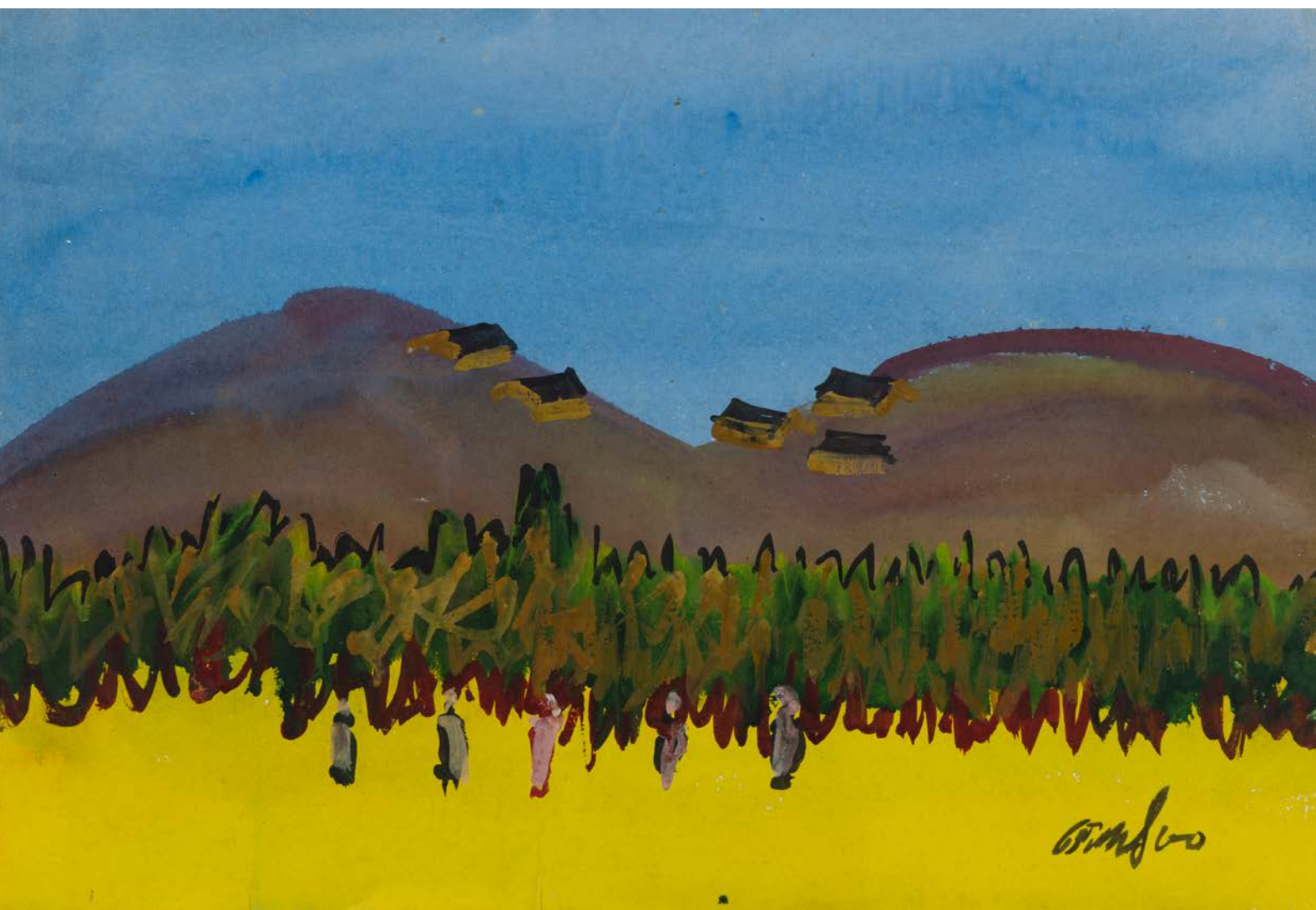
13.5 x 9.2 in. / 34.3 x 23.4 cm.

Signed in Bengali and dated (lower right)

'Gopal Ghose / 57'

# Gopal Ghose

(1913 - 1980)



*Untitled*

Gouache on paper, 1980

15.0 x 22.2 in. / 38.1 x 56.4 cm.

Signed and dated in Bengali (lower right)

'Gopal Ghose / 80'



# Gopal Ghose

(1913 - 1980)



*Untitled*

Gouache on paper, 1980

15.0 x 22.2 in. / 38.1 x 56.4 cm.

Signed and dated in Bengali (lower right)

‘Gopal Ghose / 80’

# J. Sultan Ali

(1920 - 1990)



*To the Pine City*

Oil on board, 1961

29.5 x 39.5 in. / 74.9 x 100.3 cm.

Signed in Hindi and English and dated (lower left)

'Ali / Sultan Ali / 1961'

Verso: Title, artist's name and inscription in English

# S. H. Raza

(1922 - 2016)



*Plantation*

Acrylic on Masonite board, 1971

19.5 x 8.0 in. / 49.5 x 20.3 cm.

Signed in English and dated (lower right) 'RAZA / '71';

Verso: Signed, inscribed and titled in English 'RAZA

/ P.858'71 / 20 x 50 / "Plantation"

and two labels of CORNETTE de SAINT CYR on stretcher

# S. H. Raza

(1922 - 2016)



*Iris Blanc*

Oil on Masonite board encased within  
a wooden panel, 1966

43.7 x 9.0 in. / 111.0 x 22.9 cm.

Signed in English and dated (lower right) 'RAZA / '66'

Verso: signed and inscribed in English and titled  
in French

# S. H. Raza

(1922 - 2016)



*Untitled*

Acrylic on canvas, 1980

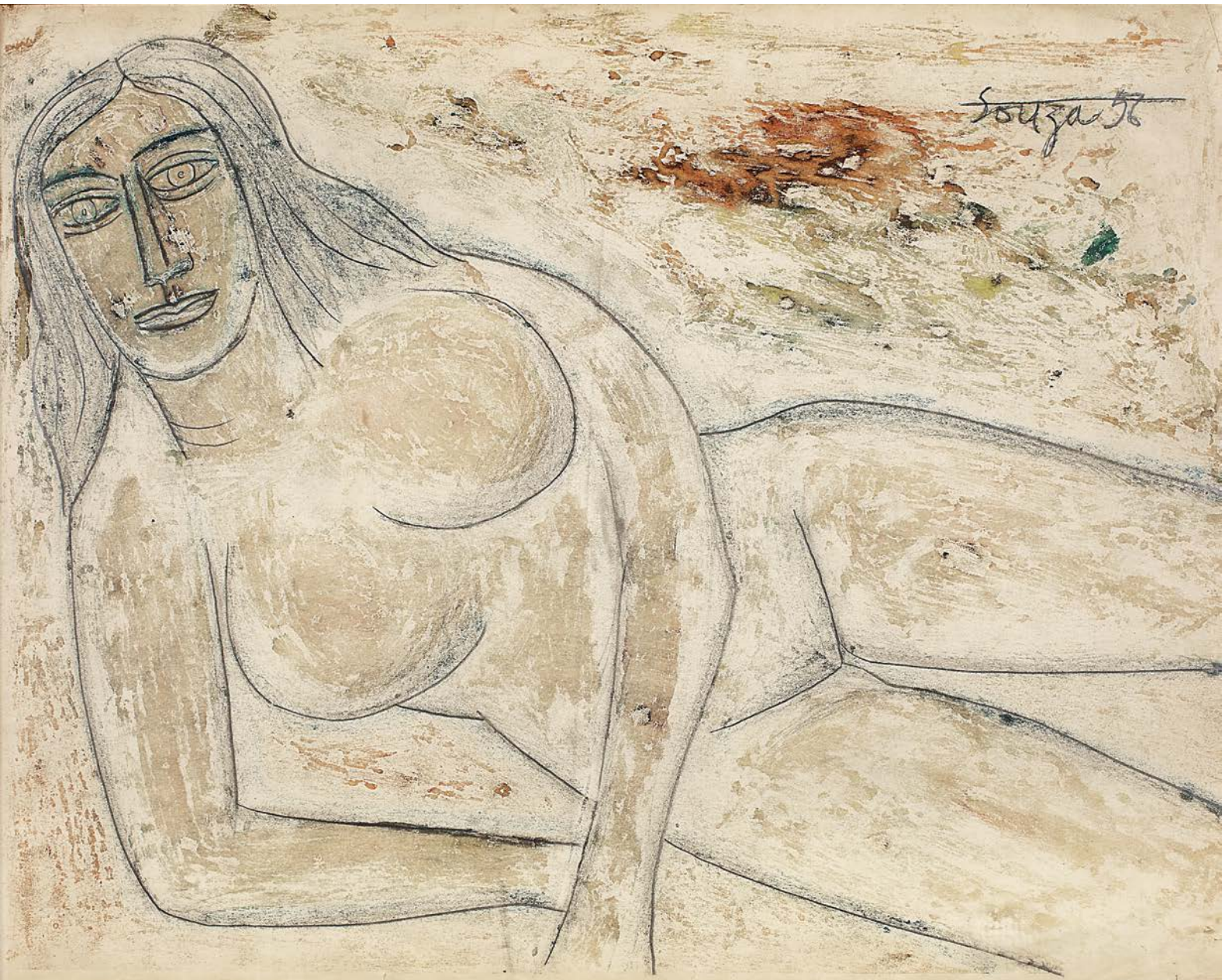
13.7 x 10.7 in. / 34.8 x 27.2 cm.

Signed in English and dated (lower right) 'RAZA / 80'

Verso: Signed, dated, and inscribed in English 'RAZA /  
1980 / 35 X 27 cms'

# F. N. Souza

(1924 - 2002)



*Untitled*

Watercolour, graphite and pastel on paper, 1956

21.2 x 27.0 in. / 53.8 x 68.6 cm.

Signed in English and dated (upper right)

'Souza / 56'

# F. N. Souza

(1924 - 2002)



*Untitled*

Charcoal on fabric, 1964

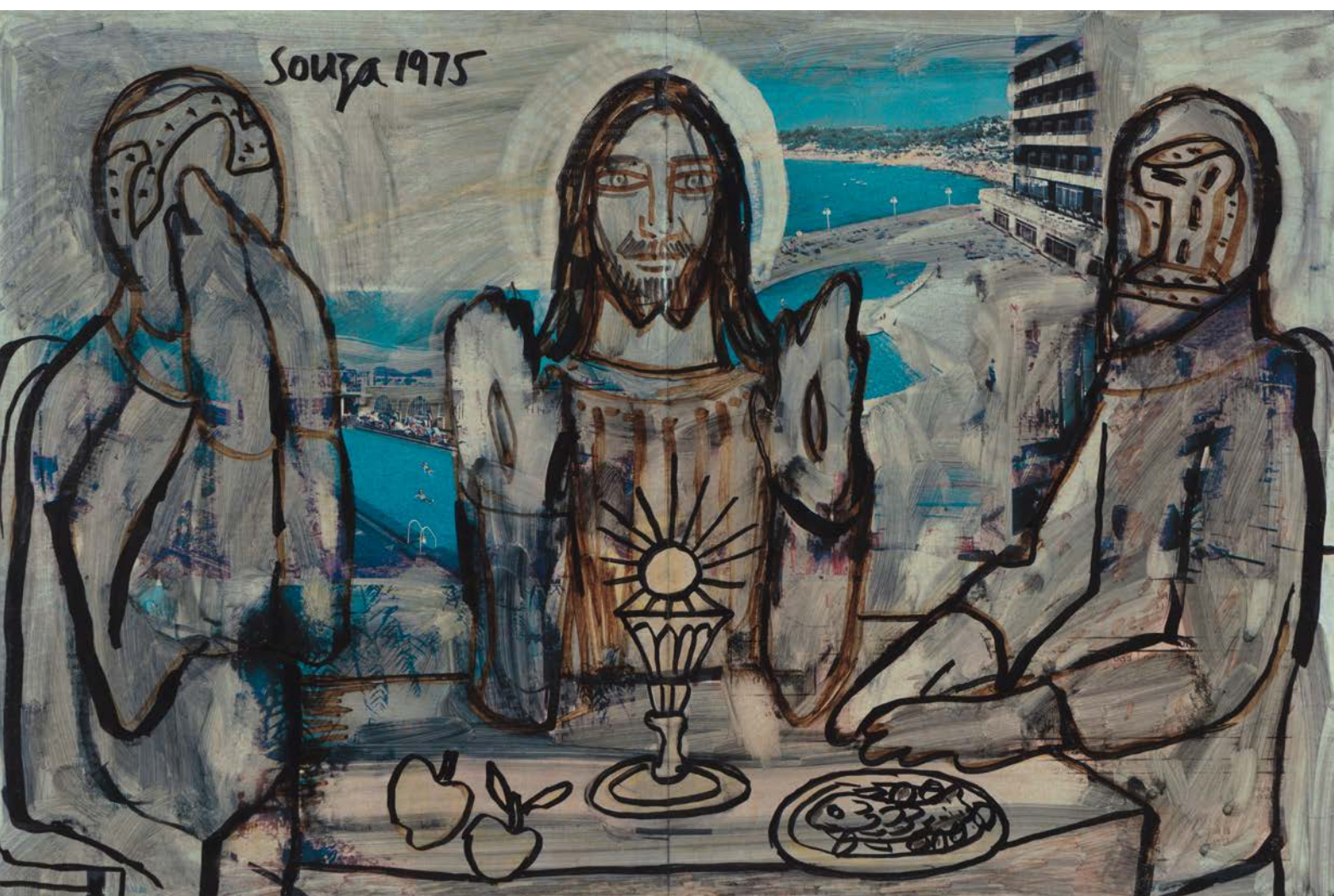
20.0 x 35.5 in. / 50.8 x 90.2 cm.

Signed in English and dated (lower right)

'Souza / 64'

# F. N. Souza

(1924 - 2002)



*Supper at Emmaus*

Chemical alteration and marker on magazine paper  
pasted on paper, 1975

11.0 x 16.2 in. / 27.9 x 41.1 cm.

Signed in English and dated (upper left) 'Souza / 1975'

Verso: Artist's name, title, date and inscription in English



# Laxman Pai

(1926 - 2021)



*Images of Goa XV*

Gouache and waterproof ink on paper, 1959

19.7 x 12.5 in. / 50.0 x 31.8 cm.

Signed in English and Marathi and dated (lower centre)

'Laxman Pai / 19-9-59'

# Laxman Pai

(1926 - 2021)



*Untitled*

Waterproof ink and gouache on paper, 1959

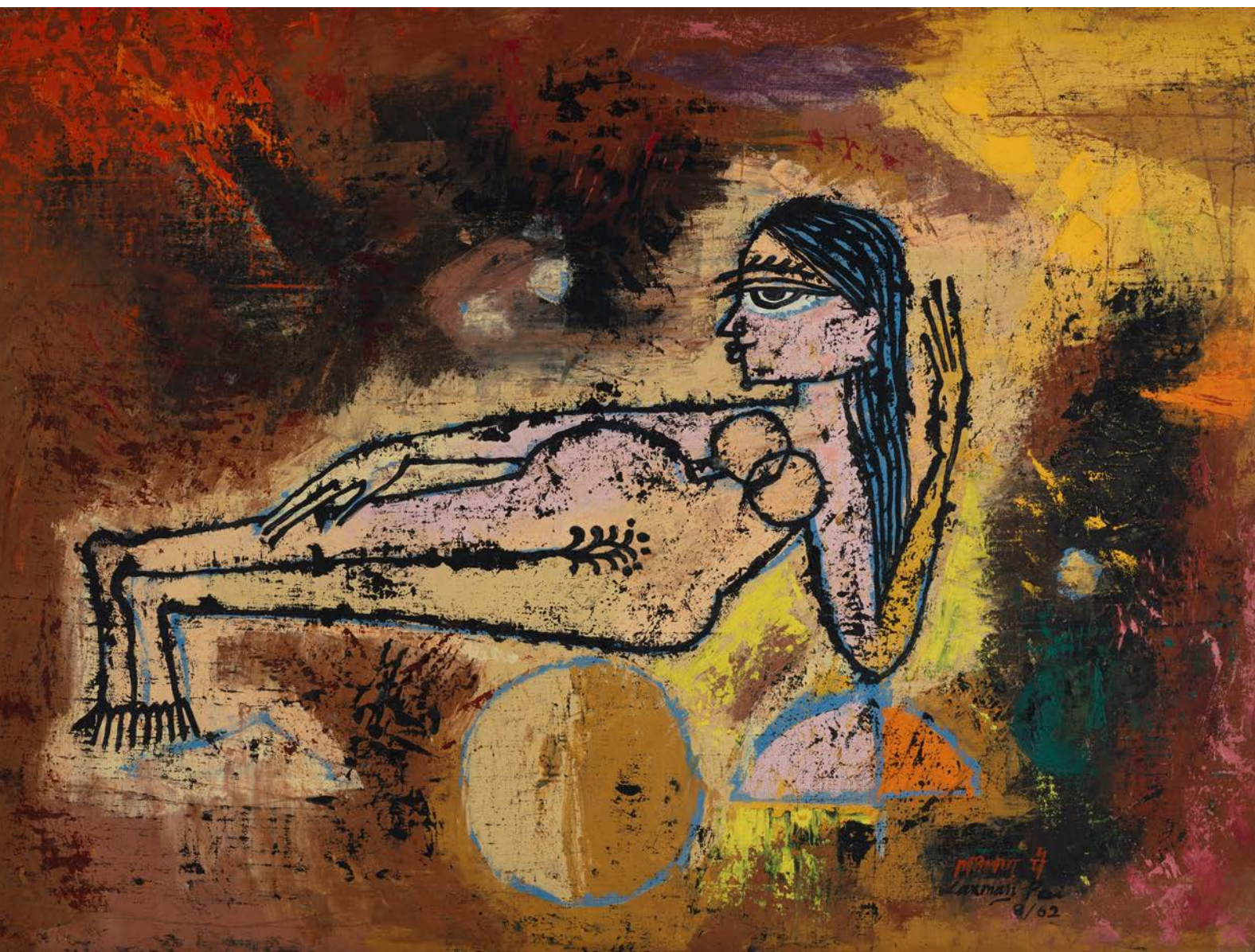
19.7 x 12.5 in. / 50.0 x 31.8 cm.

Signed in English and Marathi and dated (lower right)

'Laxman Pai / 18-9-59'

# Laxman Pai

(1926 - 2021)



*Woman on the Beach*

Oil on canvas, 1962

23.7 x 32.0 in. / 60.2 x 81.3 cm.

Signed in Marathi and English and dated (lower right)

'Laxman Pai / 8/62'

Verso: Title, inscription, and artist's name in English and date

# Laxman Pai

(1926 - 2021)



## *Girl*

Oil on Masonite board, 1958  
24.0 x 19.7 in. / 61.0 x 50.0 cm.

Signed in Marathi, signed and inscribed in English and dated (lower right) 'Laxman Pai / London / 12/58'  
Verso: Title, artist's name and inscription in English and date

# G. R. Santosh

(1929 - 1997)



*Untitled*

Acrylic on canvas, 1994

53.2 x 39.0 in. / 135.1 x 99.1 cm.

Verso: Signed in Hindi and English and dated  
'Santosh / 94'

# Avinash Chandra

(1931 - 1991)



*City*

Oil on Masonite board, 1958

24.0 x 31.7 in. / 61.0 x 80.5 cm.

Verso: Label with title in English and date 'CITY / 1958'

# Avinash Chandra

(1931 - 1991)



*Moons and Goddess*

Waterproof ink on watercolour board, 1965

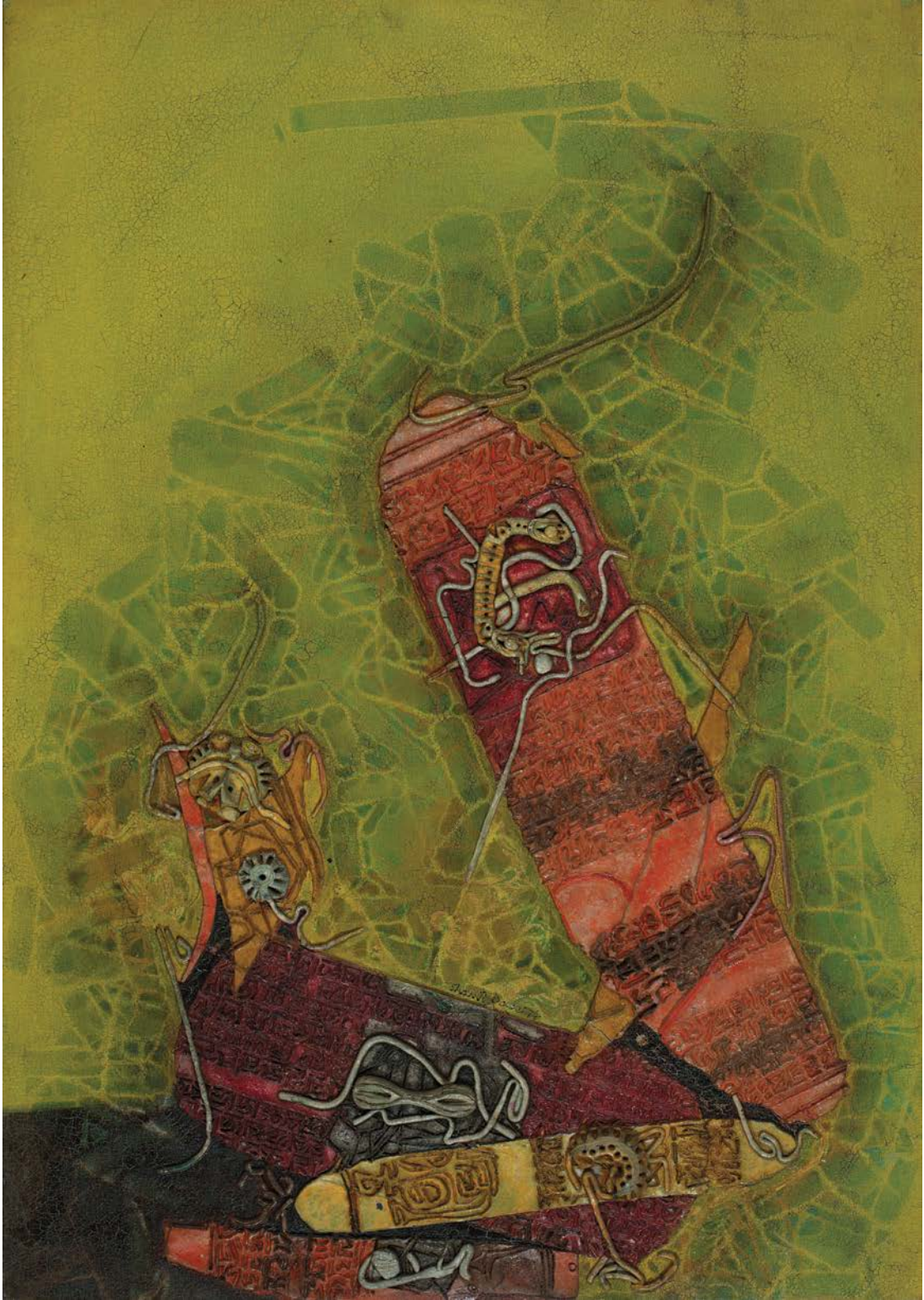
21.7 x 30.0 in. / 55.1 x 76.2 cm.

Signed in English and dated (lower left) 'Avinash / 65'

Verso: Artist's name, inscription, and title in English  
and date

# Shanti Dave

(B. 1931)



*Untitled*

Oil and encaustic on canvas, 1974

33.5 x 23.5 in. / 85.1 x 59.7 cm.

Signed in English and dated (lower centre)

'Shanti Dave. / 74.'



# Shanti Dave

(B. 1931)



*Untitled*

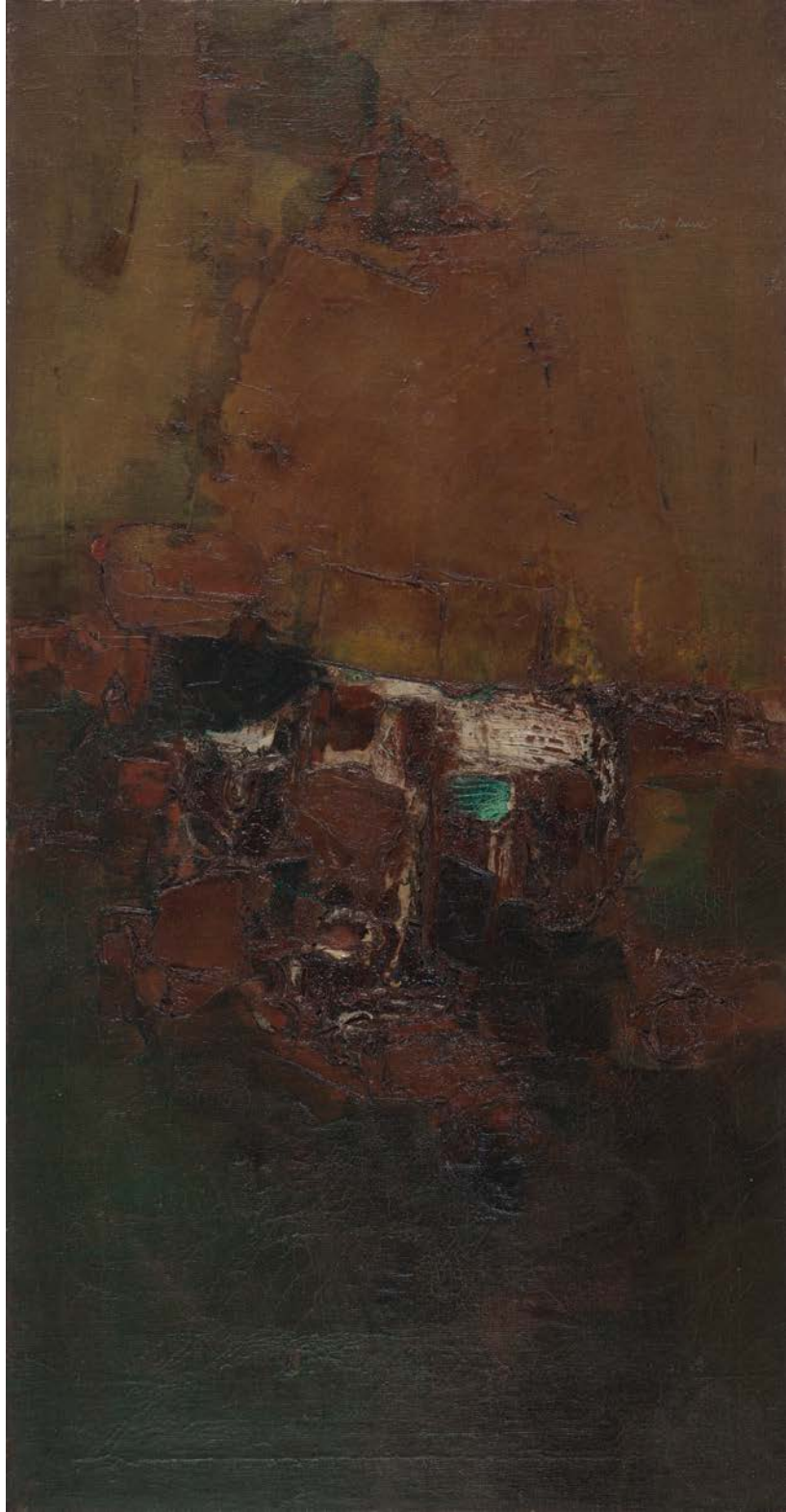
Oil and encaustic on canvas, 1995

39.5 x 24.5 in. / 100.3 x 62.2 cm.

Signed in English and dated (centre) 'Shanti Dave. / 95.'

# Shanti Dave

(B. 1931)



*Untitled*

Oil and encaustic on canvas, 1964

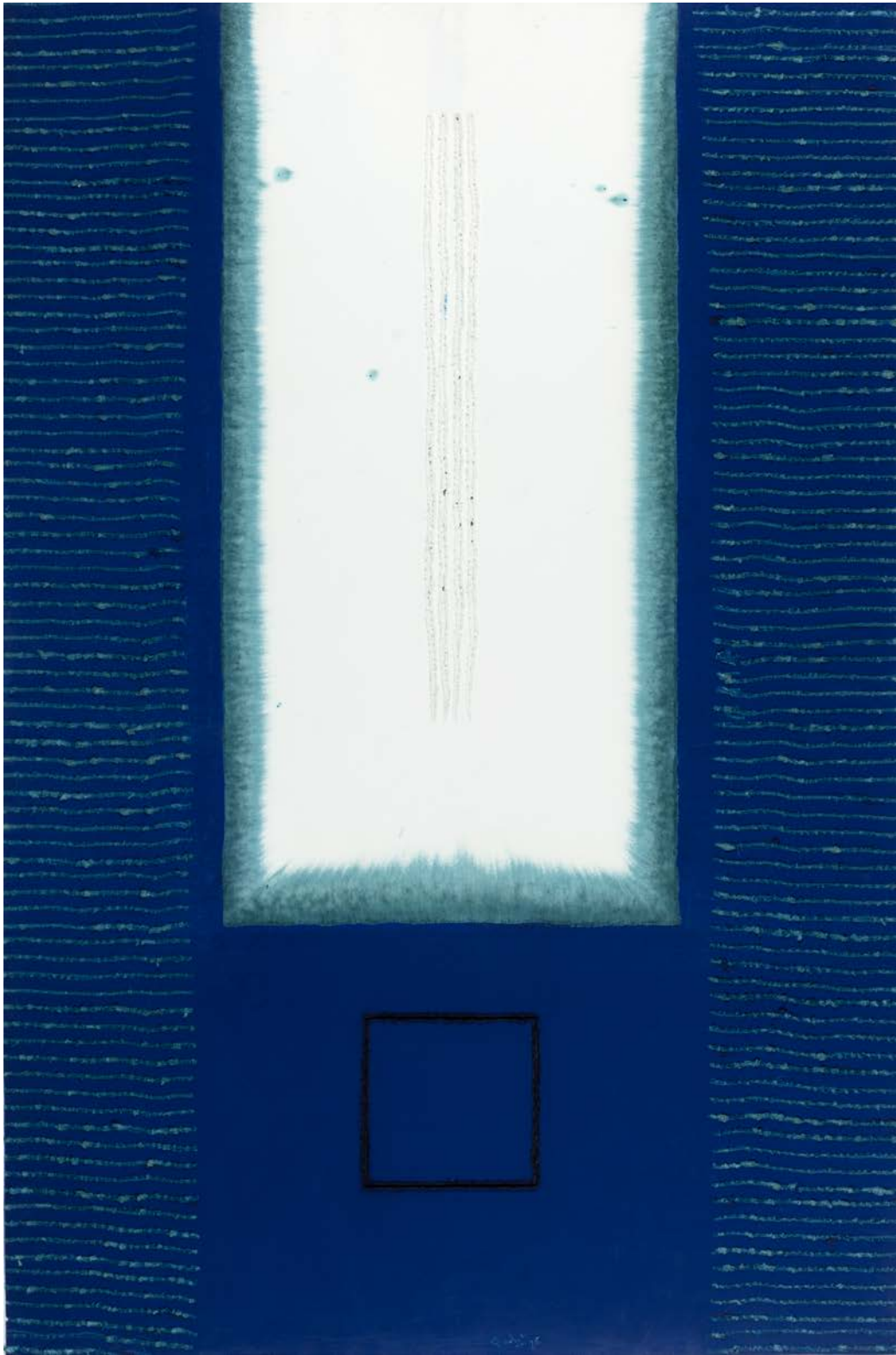
48.0 x 25.0 in. / 121.9 x 63.5 cm.

Signed in English and dated (upper right)

'Shanti Dave. / 64.'

# Sohan Qadri

(1932 - 2011)



*Untitled*

Ink and dye on paper, 1996

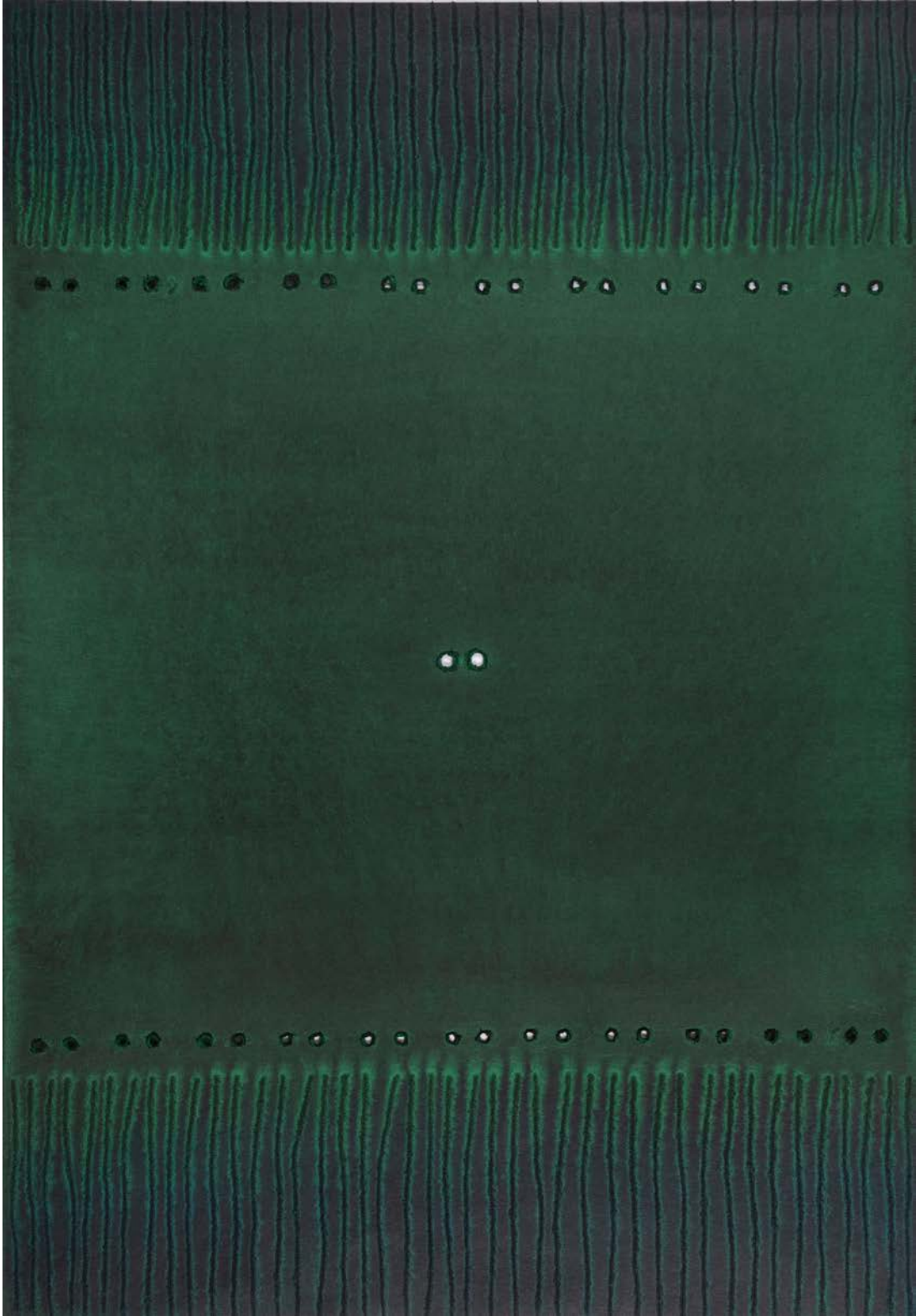
38.7 x 25.5 in. / 98.3 x 64.8 cm.

Signed in English and dated (lower centre) 'Qadri / 96'

Verso: Inscribed, signed and dated in English '9675 /  
Qadri / 96 Oct / cph'

# Sohan Qadri

(1932 - 2011)



*Untitled*

Ink and dye on paper, 2003

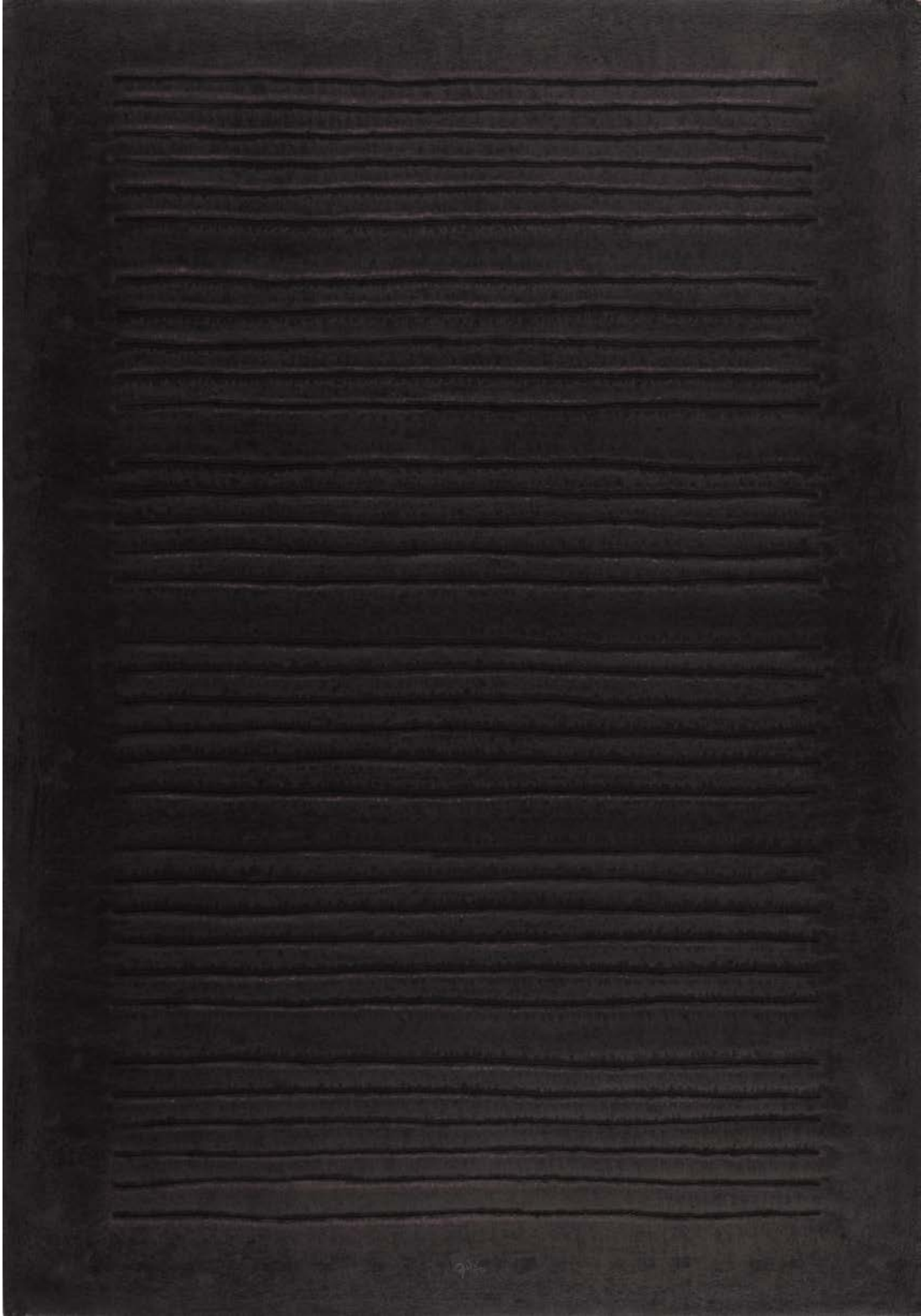
40.0 x 27.7 in. / 101.6 x 70.4 cm.

Signed in English and dated (lower right) 'Qadri / 03'

Verso: Inscribed, signed and dated in English '70 x100 /  
03170 / Qadri / 03 Dec. / cph.'

# Sohan Qadri

(1932 - 2011)



*Untitled*

Ink and dye on paper, 2000

39.7 x 27.7 in. / 100.8 x 70.4 cm.

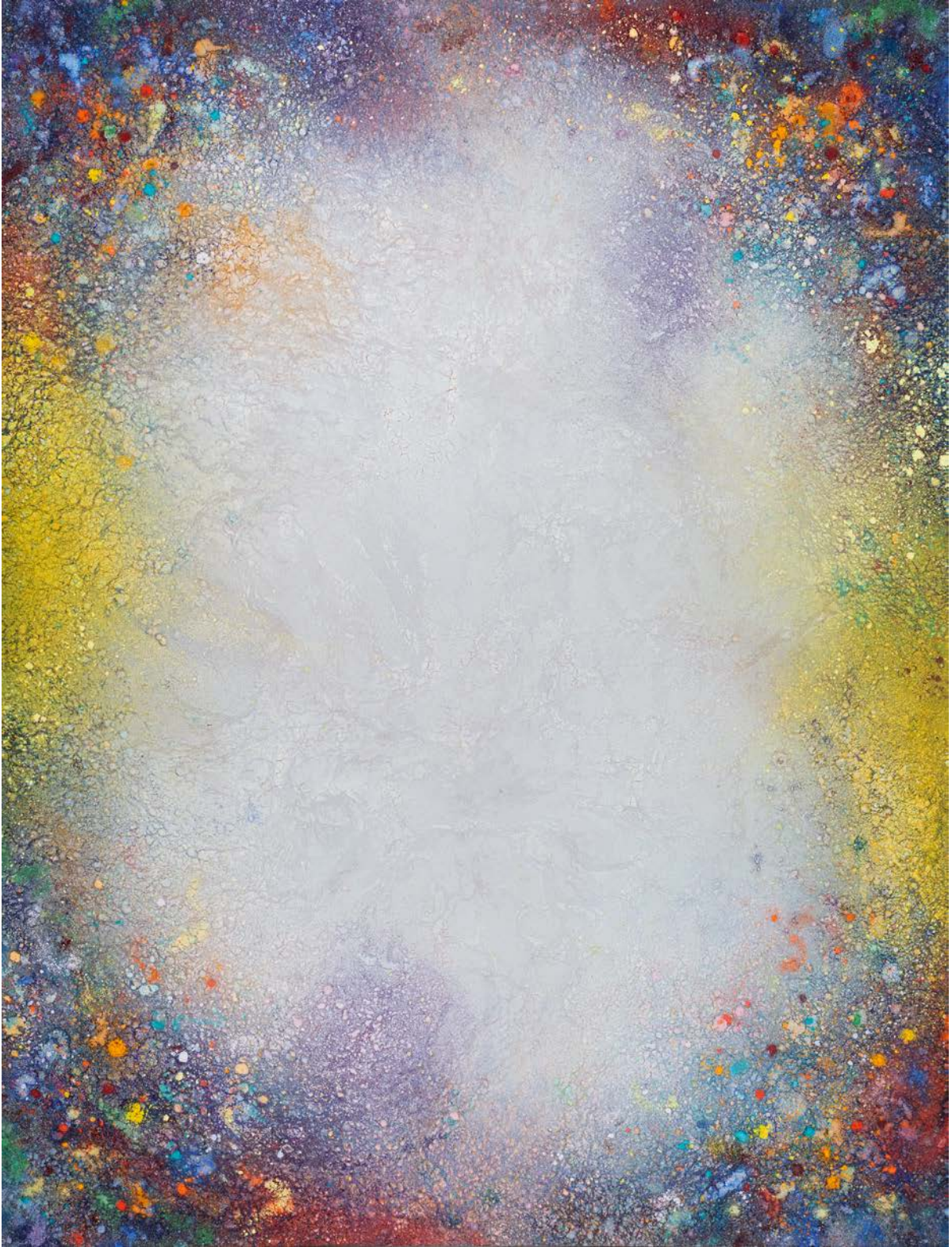
Signed in English and dated (lower centre) 'Qadri / 00'

Verso: Inscribed, signed and dated in English '70 X 100 cm

/ 2048 / Qadri / 00 July / cph'

# Natvar Bhavsar

(B. 1934)



*TEJUS III*

Dry pigments with acrylic mediums on paper, 1992

46.0 x 34.7 in. / 116.8 x 88.1 cm.

Signed in English and dated on mount (lower right)

'NATVAR BHAVSAR / 1992'

Verso: Signed and dated (twice) in English; stamp of ACP Viviane Ehrli Galerie on stretcher; label with artist's name, title, date, and inscription in English

# Natvar Bhavsar

(B. 1934)



*MAYOORA II*

Dry pigments with acrylic mediums on paper, 1989-93  
45.7 x 34.7 in. / 116.1 x 88.1 cm.

Signed in English and dated on mount (lower right) 'NATVAR  
BHAVSAR / 1993', titled further (lower right) 'MAYOORA II'

Verso: Signed in English and dated 'NATVAR BHAVSAR / 1989'; stamp  
of ACP Viviane Ehrli Galerie on stretcher; label with artist's name,  
title, date, and inscription in English on stretcher

# Madhvi Parekh

(B. 1942)



*Resting near the Pond*

Oil on canvas, 1989

36.0 x 48.0 in. / 91.4 x 121.9 cm.

Signed in Hindi and dated (lower right) 'Madhvi, / 89'

Verso: Artist's name and title in English



# Madhvi Parekh

(B. 1942)



*The Boy & his Friends*

Oil on canvas, 1983

24.0 x 30.0 in. / 61.0 x 76.2 cm.

Signed in Hindi and dated (lower right) 'Madhvi Parekh, / 83'  
Verso: Titled in English on stretcher 'THE BOY & His Friends'  
and label with inscription, artist's name, and title in English  
on stretcher

# Madhvi Parekh

(B. 1942)



*The Peacock*

Sketch pen, ink and acrylic on paper, 1991

19.7 x 25.5 in. / 50.0 x 64.8 cm.

Signed in Hindi and dated (lower left) 'Madhvi Parekh, / 91'

Verso: Artist's name, title and inscription in English and date

# Madhvi Parekh

(B. 1942)



## *The Friends*

Sketch pen, acrylic and ink on paper, 1991

19.7 x 25.5 in. / 50.0 x 64.8 cm.

Signed in Hindi and dated (lower left) 'Madhvi Parekh, / 91'

Verso: Artist's name and title in English and date

# Shobha Broota

(B. 1943)



*Origin 32*

Oil on canvas, 1989

48.0 x 48.0 in. / 121.9 x 121.9 cm.

Verso: Artist's name and date twice, title and inscription  
in English

# Shobha Broota

(B. 1943)



*Untitled*

Acrylic on canvas, 2011

48.0 x 48.0 in. / 121.9 x 121.9 cm.

Verso: Signed in English and dated 'Shobha Broota / 2011';  
label of Gallerie Nvyā with inscription and artist's name in  
English and date twice on stretcher

# Gogi Saroj Pal

(B. 1945)



## *Dancing Horse*

Gouache and acrylic on paper pasted  
on mount board, 1995

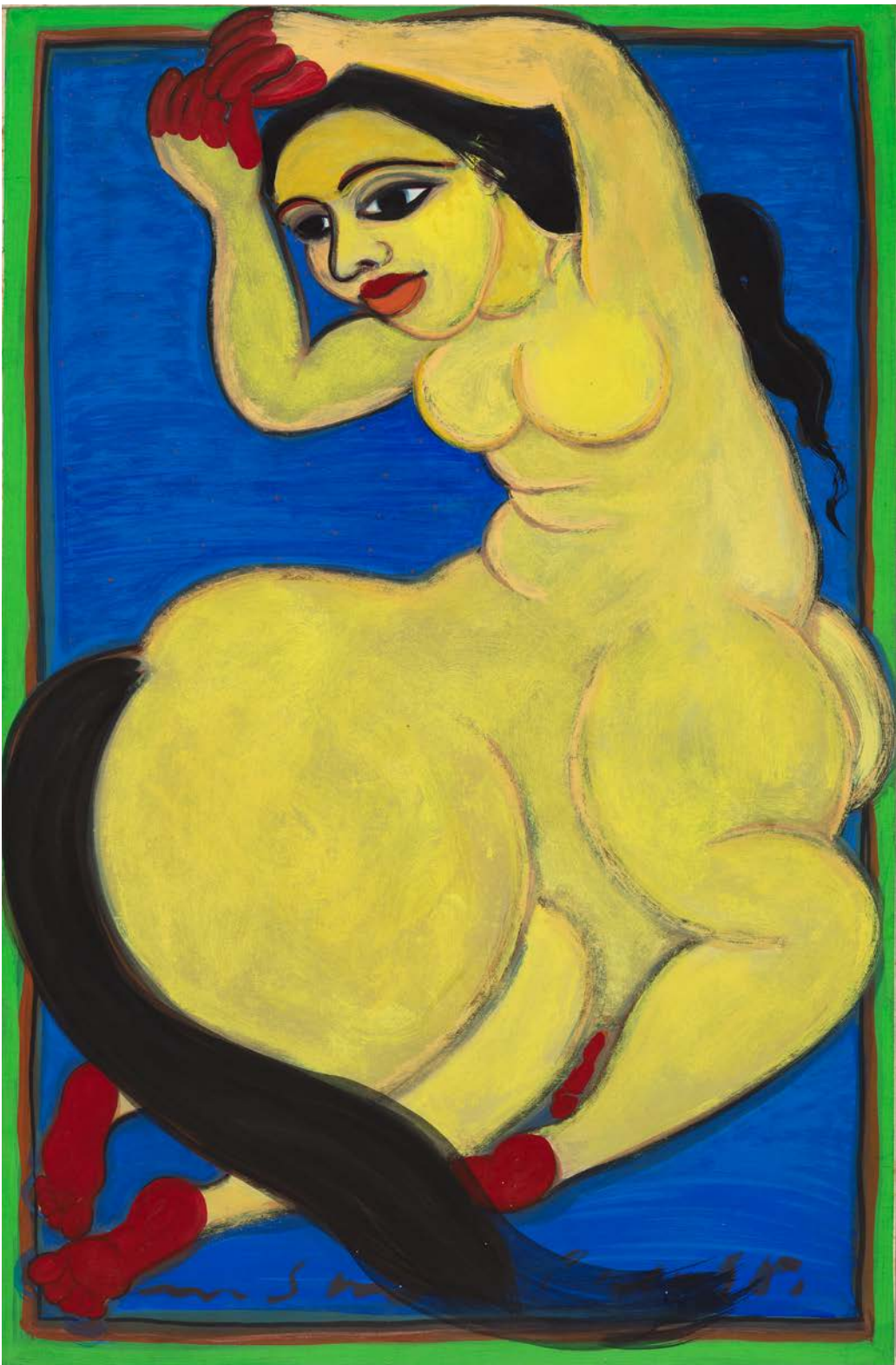
23.0 x 15.0 in. / 58.4 x 38.1 cm.

Signed in English and dated (lower centre)

'Gogi Saroj Pal / 95'

# Gogi Saroj Pal

(B. 1945)



## *Dancing Horse*

Gouache and metallic pigment on paper  
pasted on mount board, 1995  
23.0 x 15.0 in. / 58.4 x 38.1 cm.

Signed in English and dated (lower centre)  
'Gogi Saroj Pal / 95.'

# About DAG

India's most-respected art company began its journey by choosing to build a formidable collection of works by Indian artists from the 19th century onwards. In acquiring artists' studios and estates, it has paid homage to their legacy and created a large pool of artists and artworks that, taken together, tell the story of Indian art.

In the three decades since DAG's foundation, the Indian art world has seen far-reaching changes in which the company has played a stellar role. Its iconic exhibitions curated to provide art-historical overviews have brought to the fore important artists neglected through the passage of time while also documenting critical art movements and collectives. New generations of art lovers have been able to reclaim the inheritance of forgotten masters through DAG's pathbreaking curations at its galleries as well as participation in international art fairs, and collaborations with museums and cultural institutions in India and abroad.

At the heart of DAG's programming is an ongoing research curriculum responsible for lending support to art writers and curators; a rigorous publishing calendar with an impressive library of books that document Indian art history; a museums outreach programme focussed at engaging the public; commissioning of videos and films in relation to artists and their work; and engagements with artists, critics and the art community at large. Through these initiatives, DAG remains steadfast in its commitment to foster an appreciation for, and the dissemination and promotion of Indian art.

An important aspect of DAG's collaborative efforts has been to work with institutions and museums, whether through the loan of its works for the purpose of exhibitions or for establishing comprehensive public-private museum exhibitions such as those it had undertaken at Delhi's Red Fort (*Drishyakala*) or Kolkata's Old Currency Building (*Ghare Baire*) with Archaeological Survey of India. Set up as museums, these exhibitions ran for periods of three years and two years, respectively, garnering an amazing response from viewers.

DAG recently acquired Jamini Roy's studio-cum-house in Kolkata and is in the process of setting up its first single-artist museum dedicated to the National Treasure artist. It has galleries in Mumbai, New Delhi, and New York.





**DAG**